

Luxurious 2/3 BHK Deluxe Flats



# PANCHWATI

*Enclave*

Behind Hi-Tech Hospital  
Saguna More, Danapur, Patna



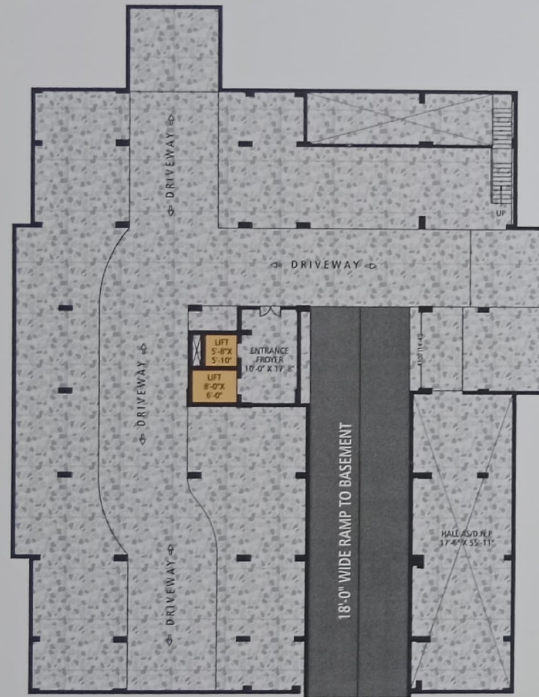
PROJECT BY

MAA SUNAINA CONSTRUCTION PVT. LTD.

RERA Approved  
BRERAPO0250-3/194/R-1339/2022



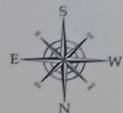




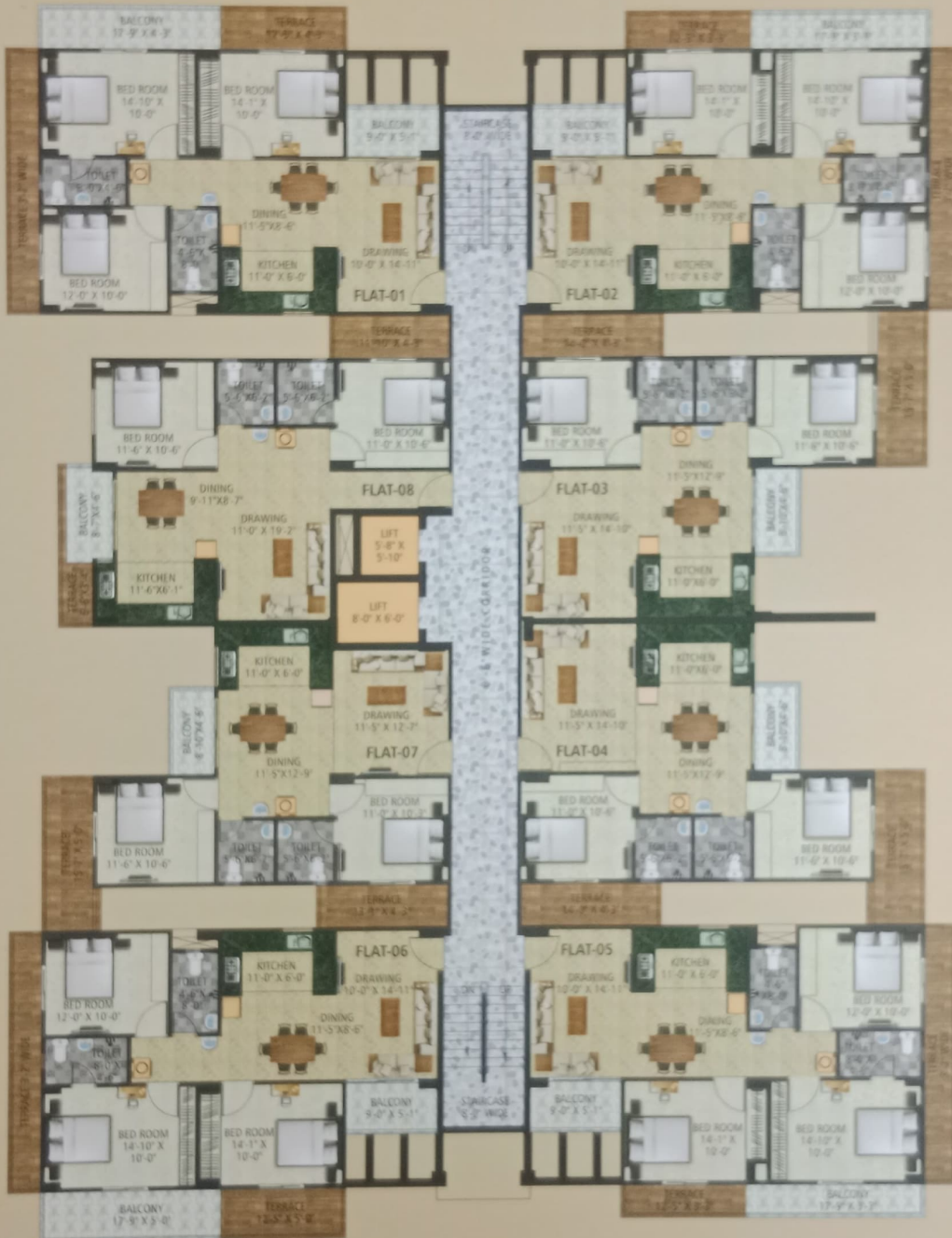
**BASEMENT PLAN**



**GROUND FLOOR PLAN**



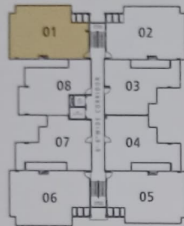
## TYPICAL FLOOR BOOKING PLAN



- Flat # 1 (3 BHK)**  
Super B/U Area : 1500.00 sqft
- Flat # 2 (3 BHK)**  
Super B/U Area : 1485.00 sqft
- Flat # 3 (2 BHK)**  
Super B/U Area : 1185.00 sqft
- Flat # 4 (2 BHK)**  
Super B/U Area : 1180.00 sqft
- Flat # 5 (3 BHK)**  
Super B/U Area : 1460.00 sqft
- Flat # 6 (3 BHK)**  
Super B/U Area : 1530.00 sqft
- Flat # 7 (2 BHK)**  
Super B/U Area : 1145.00 sqft
- Flat # 8 (2 BHK)**  
Super B/U Area : 1160.00 sqft



## FLAT LAYOUT



### Flat # 1 (3 BHK)

Carpet Area : 837.43 sqft  
Balcony Area : 120.70 sqft  
B/U Area : 1019.34 sqft  
Terrace Area : 131.21 sqft  
Super B/U Area : 1500.00 sqft

3 Bedroom 2 Bathroom  
2 Balcony 2 Terrace



### Flat # 2 (3 BHK)

Carpet Area : 837.43 sqft  
Balcony Area : 112.10 sqft  
B/U Area : 1011.05 sqft  
Terrace Area : 125.29 sqft  
Super B/U Area : 1485.00 sqft

3 Bedroom 2 Bathroom  
2 Balcony 2 Terrace





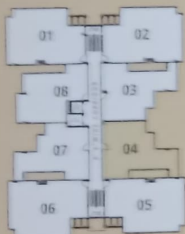
## FLAT LAYOUT



### Flat # 3 (2 BHK)

Carpet Area : 682.53 sqft  
 Balcony Area : 38.51 sqft  
 B/U Area : 772.15 sqft  
 Terrace Area : 136.55 sqft  
 Super B/U Area : 1185.00 sqft

2 Bedroom    2 Bathroom  
 1 Balcony    2 Terrace



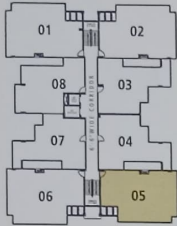
### Flat # 4 (2 BHK)

Carpet Area : 680.06 sqft  
 Balcony Area : 38.51 sqft  
 B/U Area : 770.88 sqft  
 Terrace Area : 136.55 sqft  
 Super B/U Area : 1180.00 sqft

2 Bedroom    2 Bathroom  
 1 Balcony    2 Terrace



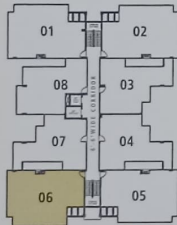
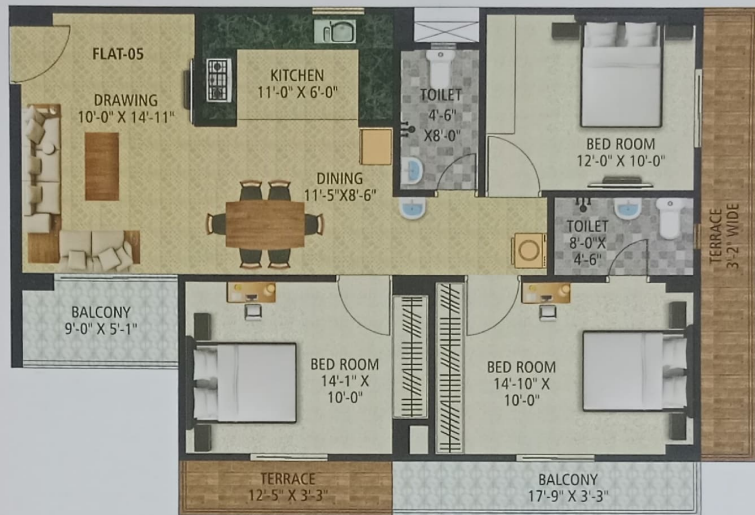
## FLAT LAYOUT



### Flat # 5 (3 BHK)

Carpet Area : 837.43 sqft  
Balcony Area : 103.50 sqft  
B/U Area : 1002.44 sqft  
Terrace Area : 119.26 sqft  
Super B/U Area : 1460.00 sqft

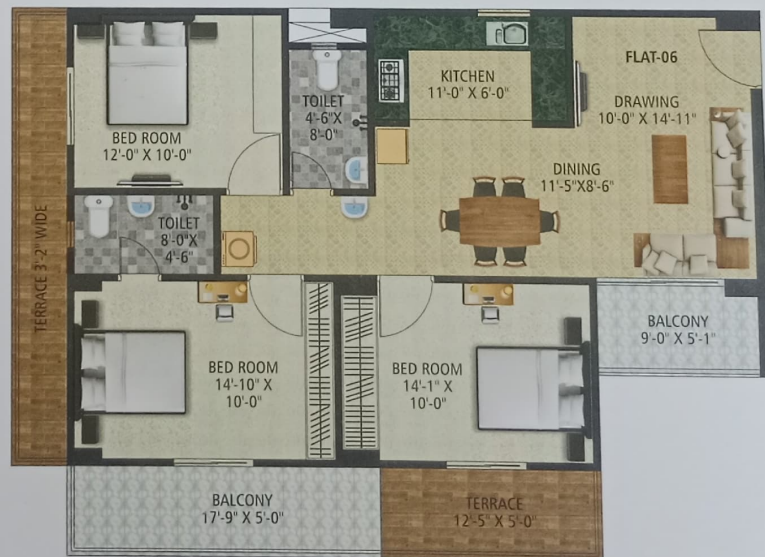
3 Bedroom 2 Bathroom  
2 Balcony 2 Terrace



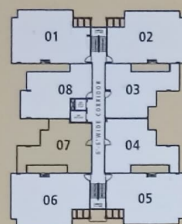
### Flat # 6 (3 BHK)

Carpet Area : 837.43 sqft  
Balcony Area : 133.59 sqft  
B/U Area : 1032.90 sqft  
Terrace Area : 140.25 sqft  
Super B/U Area : 1530.00 sqft

3 Bedroom 2 Bathroom  
2 Balcony 2 Terrace

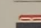

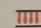



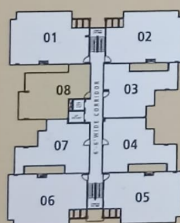
## FLAT LAYOUT



### Flat # 7 (2 BHK)

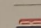
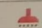


Carpet Area : 657.99 sqft  
 Balcony Area : 38.51 sqft  
 B/U Area : 744.94 sqft  
 Terrace Area : 132.78 sqft  
 Super B/U Area : 1145.00 sqft

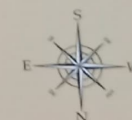
 2 Bedroom  2 Bathroom  
 1 Balcony  2 Terrace



### Flat # 8 (2 BHK)

Carpet Area : 718.16 sqft  
 Balcony Area : 40.44 sqft  
 B/U Area : 811.57 sqft  
 Terrace Area : 76.97 sqft  
 Super B/U Area : 1160.00 sqft

 2 Bedroom  2 Bathroom  
 1 Balcony  2 Terrace







**RULES & REGULATIONS**

- Internal changes shall be done only with prior permission of architect & project consultant & shall be charged extra.
- All the building plans, layout, specifications etc. are tentative and subject to variation and modification as may be decided by the architect/company, accessories shown in the layout plans in the brochure such as furniture, cabinet, appliances etc. are purely indicative and not a part of sale offering.

1st/3rd/5th. top 6th.



## COMPLETED PROJECTS



**SAKET APARTMENT**  
Patel Nagar



**VIKASH ENCLAVE**  
Beur More



**RAJMANI APARTMENT**  
Patel Nagar



**BHAGWATI ENCLAVE**  
Ranjan Path, Gola Road